

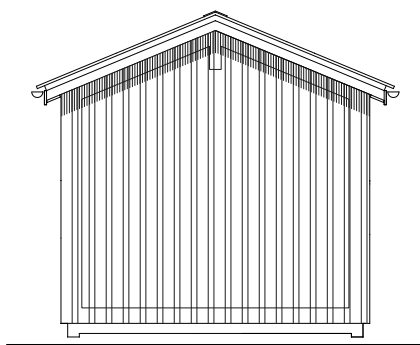
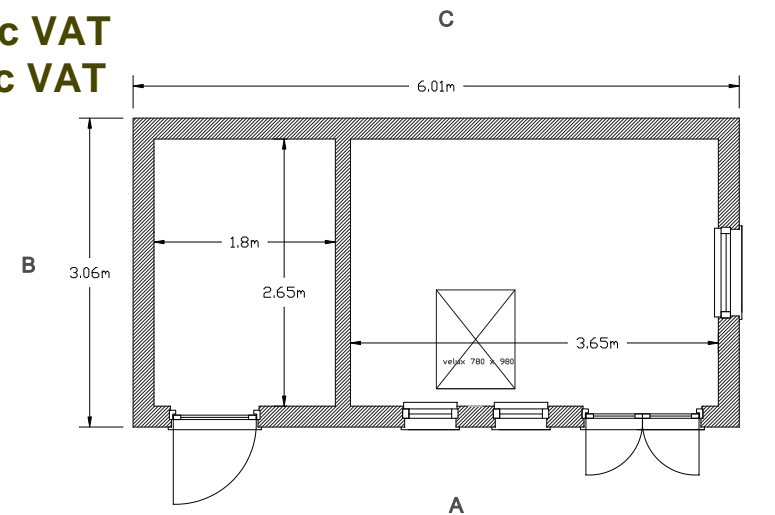
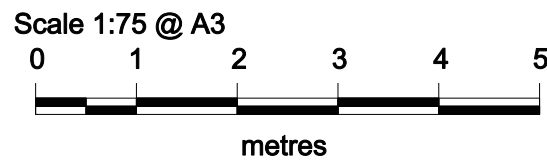
Smaller office/garden store 8.601m x 3.06m - internal office space
 Office internal floor space 3.65m x 2.65m
 Store internal floor space 1.8m x 2.65m

Our client works from home and needed an office/garden store combination that would fit across the bottom of his garden. His children also share the space to do their homework.

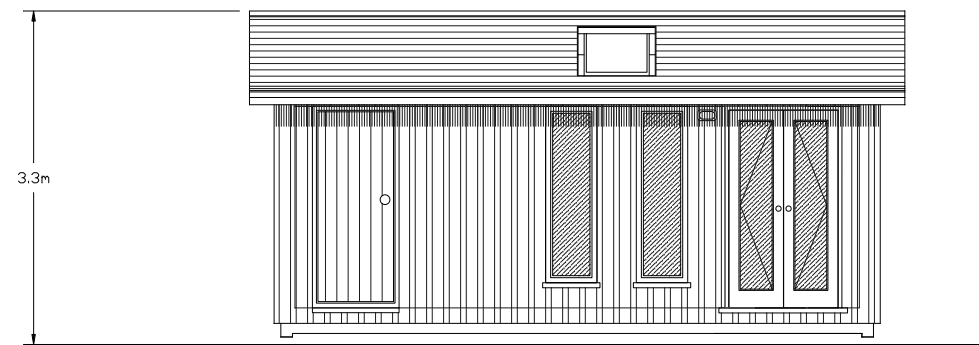
Office/store guide price £30,500 inc VAT
 Foundations guide price £3,200 inc VAT



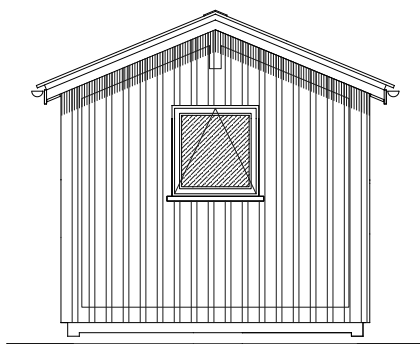
Giving you breathing space



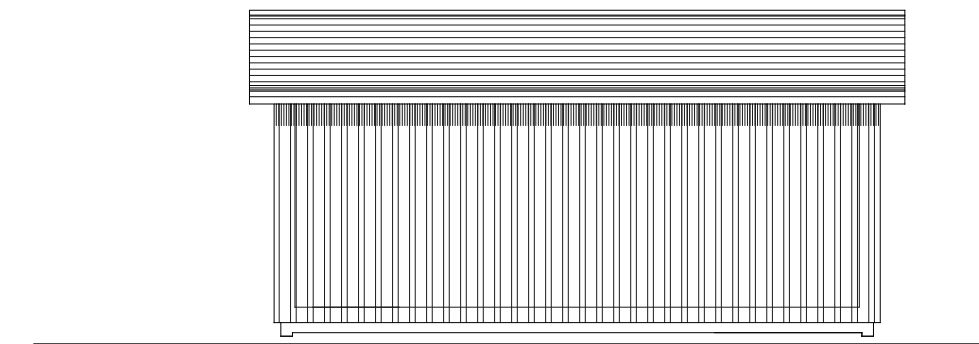
S E elevation (B)



N E elevation (A)



N W elevation (D)



S W elevation (C)



Copyright of this building belongs to Insideout Buildings Ltd., The Green, Over Kellet, Lancashire. LA6 1BU.

www.iobuild.co.uk

lynn@iobuild.co.uk

01524 737999

[Return to prices page](#)